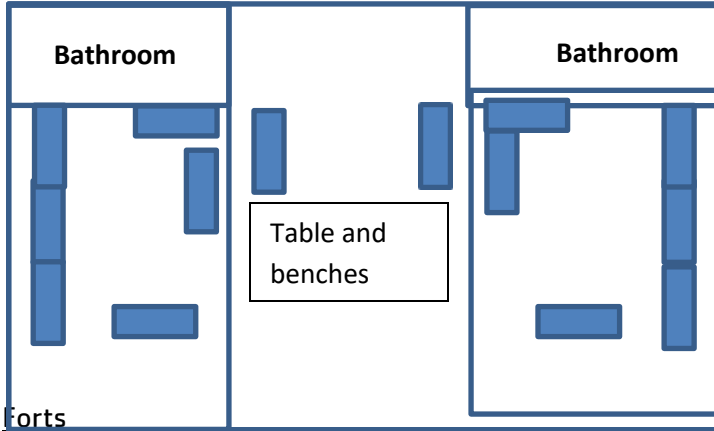


School and Group Lodging

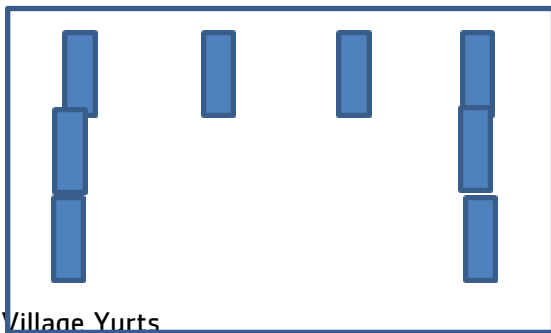
Cabins

Sleep 12 each side, attached bathrooms on each wing
Eagles Nest 1&2, Fox Glen 3&4, Deer Run 5&6, Wolf Lair 7&8



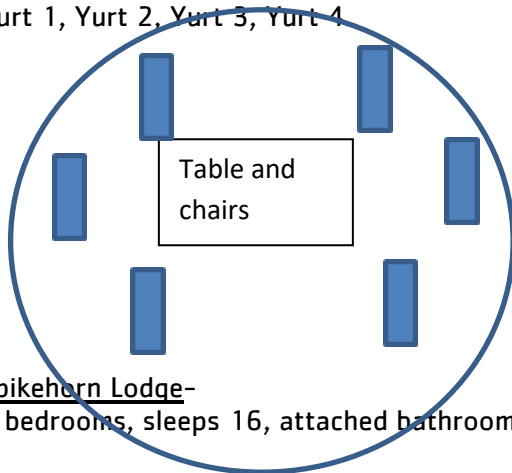
Forts

Sleeps 16 total, use bathhouse, enter by staircase, upper level only
Bear Den Fort 1, Otter Trail Fort 2, Beaver House Fort 3, Squirrel Hollow Fort 4



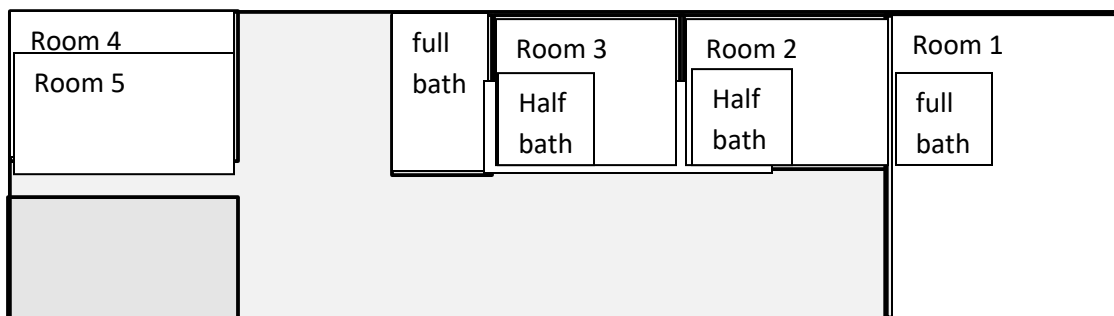
Village Yurts

Sleeps 12 total, use bathhouse
Yurt 1, Yurt 2, Yurt 3, Yurt 4



Spikehorn Lodge-

5 bedrooms, sleeps 16, attached bathrooms



Summer Only Lodging

Traditional South Cabins

Sleep 12 total, use bathhouse
Michigan, Michigan State

South Yurts

Sleep 16 total, use bathhouse
Central, Western

School and Group Meeting Spaces

Dining Hall- full group space

Rec Room – full group space

Kalh 3 season pavilion – large breakout space

Athletic field pavilion – medium breakout space

Spikehorn Conference Room – medium breakout space

Arts and Crafts – small breakout space

Nature Center- small breakout space